

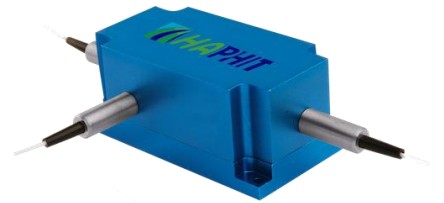
1020nm High Power 3-port PM Optical Circulator

FEATURES

- High Isolation
- Low Insertion Loss
- Epoxy-Free Optical Path
- High Reliability and Stability
- Low Profile Packaging

APPLICATIONS

- Fiber Optic Amplifiers
- Fiber Optic Instruments
- WDM Systems
- Dispersion Compensation
- Light Routing

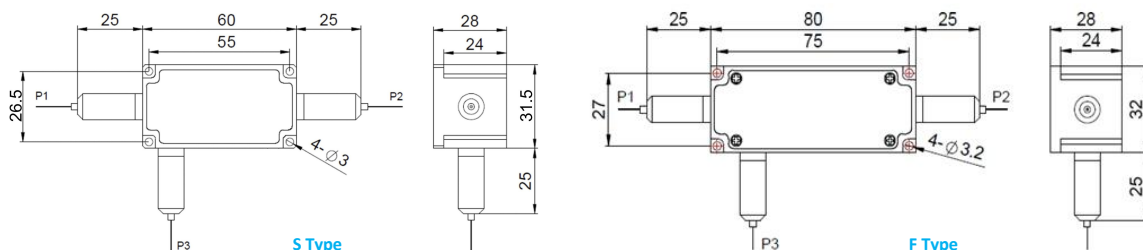


SPECIFICATIONS

Parameter	Unit	Value
Center Wavelength	nm	1020
Operating Wavelength Range	nm	+/-10
Insertion Loss@ 23 °C	(Typ.) dB	0.8
(1→2 or 2→3)	(Max.) dB	1.8
Isolation @ 23 °C	(Typ.) dB	22
(3→2 or 2→1)	(Min.) dB	18
Work Mode	S Type	- Can only work in slow axis
	F Type	- Can work both in slow axis and fast axis
Optical Return Loss	dB	≥45
Extinction Ratio	dB	18
Fiber Type	-	PM980 Fiber, PM1060L Fiber (E) or PM1060L-FA Fiber (L) 10/125um PMDC Fiber (O) or 15/130um PMDC Fiber (W) 20/130um PMDC Fiber (Q) or 25/250um PMDC Fiber (R)
Fiber Tensile Load	N	5
Maximum Optical Power (CW)	W	0.3, 0.5, 1, 2, 3, 5, 10, 15, 20, 25, 30
Operating Temperature	°C	0~50
Storage Temperature	°C	-10~65

- Note:**
- Specifications are for device without connectors; Specifications may change without notice.
 - To add connectors, IL is 0.5dB higher, RL is 5dB lower, ER is 2dB Lower, Connector key is aligned to slow axis.
 - Only guarantee 1W continuous wave (CW) power thru testing for connectors added.
 - Devices for higher optical power or with other type fiber or consigned fiber are also available; Devices can only work in the core of Double Cladding (DC) Fiber, Cladding Power must be stripped before connecting the device
 - Package size maybe different for different fiber type, optical power, etc.

PACKAGE DIMENSION



ORDERING INFORMATION (PN)

FPCR-	NNNN	- (C)	3HP NN	- (NN)	- C	C	NN	- CC/CCC
Center Wavelength	Work Mode	Optical Power	Optical Power P2	Fiber Type	Fiber Sleeve	Fiber Length	Connector Type	
1020-1020nm	F Type	03- 300mW	1- 1W	2-PM980Fiber	B- Bare Fiber	05-0.5m	N-Without Connector	
	Blank for S Type	1- 1 Watts	2- 2W	E-PM1060L Fiber	L- Loose Tube	10-1.0m	FC/APC=FC/APC Connector	
		10- 10 Watts	5-5W	Q-20/130 PMDC Fiber	2- 2mm Cable	15-1.5m	LC/PC=LC/PC Connector	
		25- 25 Watts	Blank for P2=P1	R-25/250 PMDC Fiber	3- 3mm Cable	20-2.0m	SC/UPC=SC/UPC Connector	

