

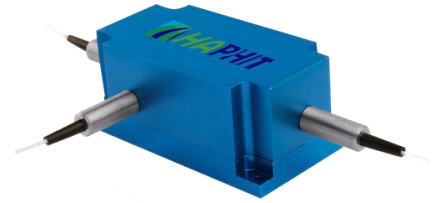
## 750~810nm 3-port PM Optical Circulator

### FEATURES

- High Isolation
- Low Insertion Loss
- Epoxy-Free Optical Path
- High Reliability and Stability
- Low Profile Packaging

### APPLICATIONS

- Fiber Optic Amplifiers
- Fiber Optic Instruments
- WDM Systems
- Dispersion Compensation
- Light Routing

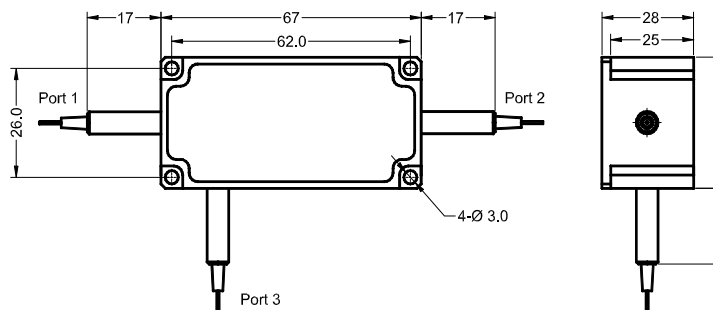


### SPECIFICATIONS

Parameter	Unit	Value
Working Wavelength	nm	750±10, 780±10, 793±10, 808±10
Insertion Loss@23°C	(Typ.)	1.0
	(Max.)	1.8
Isolation@23°C	(Typ.)	19
	(Min.)	16
Extinction Ratio	dB	≥16
Optical Return Loss	dB	≥45
Cross Talk	dB	≥40
Work Mode	S Type	-
	F Type	-
Fiber Type	-	PM850 Fiber or PM780-HP Fiber
Fiber Tensile Load	N	5
Maximum Optical Power (CW)	W	0.3, 0.5, 1, 2, 3, 5, 10, 15, 20
Operating Temperature	°C	0~50
Storage Temperature	°C	-10~65

- Note:**
- Specifications are for device without connectors; Specifications may change without notice.
  - To add connectors, IL is 0.7dB higher, RL is 5dB lower, ER is 2dB Lower, Connector key is aligned to slow axis.
  - Only guarantee 1W continuous wave (CW) power thru testing for connectors added.
  - Devices for higher optical power or with other type fiber or consigned fiber are also available.
  - Package size may be different for different optical power and fiber types

### PACKAGE DIMENSION



### ORDERING INFORMATION (PN)

FPCR-	NNN	-(C)	3HP	NN	-(NN)	-	N	C	NN	-	CC/CCC
Center Wavelength	Work Mode	Optical Power	Optical Power P2	Fiber Type	Fiber Sleeve	Fiber Length	Connector Type				
750~750nm	F=F Type	03= 300mW	1= 1W	2=PM850 Fiber	B= Bare fiber	05=0.5m	N=Without Connector				
780~780nm	Blank for S Type	1= 1 Watts	2= 2W	7=PM780-HP Fiber	L= Loose Tube	10=1.0m	FC/APC=FC/APC Connector				
790~790nm		3= 3 Watts	5=5W		2=2mm Cable	15=1.5m	LC/PC=LC/PC Connector				
808~808nm		10= 10 Watts	Blank for P2=P1		3=3mm Cable	20=2.0m	SC/UPC=SC/UPC Connector				

