

1103nm High Power PM Optical Isolator

FEATURES

- High Isolation
- Low Insertion Loss
- Epoxy-Free Optical Path
- High Reliability and Stability
- Low Profile Packaging

APPLICATIONS

- Broadband Systems
- Optical Amplifying Systems
- Telecommunication Networks
- Metro Networks
- CATV Networks

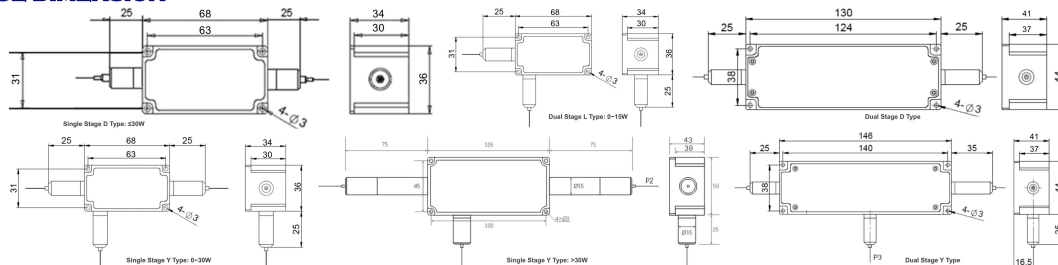


SPECIFICATIONS

Parameter	Unit	Single Stage	Dual Stage D Type	Dual Stage L Type
Center Wavelength (λc)	nm	1103		
Operating Wavelength Range	nm	+/-10		
Peak Isolation (Typ.)	dB	28	46	
Min. Isolation (23°C)	dB	22	40	
Typical Insertion Loss (λc, 23°C)	dB	1.0	1.3	1.5
Max. Insertion Loss (λc, 23°C)	dB	1.6	1.8	
Optical Return Loss (Input/Output)	dB	50/50		
Extinction Ratio (Min.)	dB	18		
Working Mode	S Type	-	Can only work in Slow Axis	
	F Type	-	Can work both in Slow Axis and Fast Axis	
Configuration	-	Standard: 2-Port; Y Type: 3-Port, Backward Power Guide Out		
Fiber Type	Input&Output	-	PM980 Fiber, PM1060L Fiber (E) or PM1060L-FA Fiber (L)	
			10/125um PMDC Fiber (O), 15/130um PMDC Fiber (W)	
	3rd Port (Y Type)		-	20/130um PMDC Fiber (Q) or 25/250um PMDC Fiber (R)
		-	Same Fiber or 105/125um MM Fiber	
Fiber Tensile Load	N	5		
Maximum Optical Power (CW)	W	1, 2, 3, 5, 10, 15, 20, 30, 50, 60, 80, 100, 150, 200		
Max. Backward Optical Power (CW)	W	0.3, 0.5, 1, 2, 3, 5, 10		
Operating Temperature	°C	0~50		
Storage Temperature	°C	-20~75		

- Note:**
- Specifications are for device without connectors; Specifications may change without notice.
 - To add connectors, IL is 0.5dB higher, RL is 5dB lower, ER is 2dB Lower, Connector key is aligned to slow axis.
 - Only guarantee 1W continuous wave (CW) power thru testing for connectors added.
 - Suggest to use Y type for >30W Optical Power or continuous backward power of ≥2W.
 - Devices for higher optical power or with other type fiber or consigned fiber are also available; Devices can only work in the core of Double Cladding (DC) Fiber, Cladding Power must be stripped before connecting the device.
 - Package dimensions may be different for different fiber type, configuration and optical power.

PACKAGE DIMENSION



ORDERING INFORMATION (PN)

FPIS-NNNN	- (C)	C	(C)	HP NN	- (NN)	- C	C	NN	- CC/CCC
Center Wavelength	Stage	Type	3rd Port Fiber	Optical Power	Backward Power	Fiber Type	Fiber Sleeve	Fiber Length	Connector Type
1103~1103nm	D=D Type	S= S Type	Y= Same Fiber	1~1W	05~500mW	2~PM980Fiber	B= Bare Fiber	05~0.5m	N=Without Connector
	L=L Type	F= F Type	A=105/125um Fiber	3~3W	1~1W	E~PM1060L Fiber	L= Loose Tube	10~1.0m	FC/APC=FC/APC Connector
	N= Package N		S=Corr. SM Fiber	10~10W	10~10W	Q~20/130 PMDC Fiber	2= 2mm Cable	15~1.5m	LC/PC=LC/PC Connector
	Blank for Single		Blank for Standard	100~100W	Blank for 300mW	R~25/250 PMDC Fiber	3= 3mm Cable	20~2.0m	SC/UPC=SC/UPC Connector

